

CUSTOMER INFORMATION

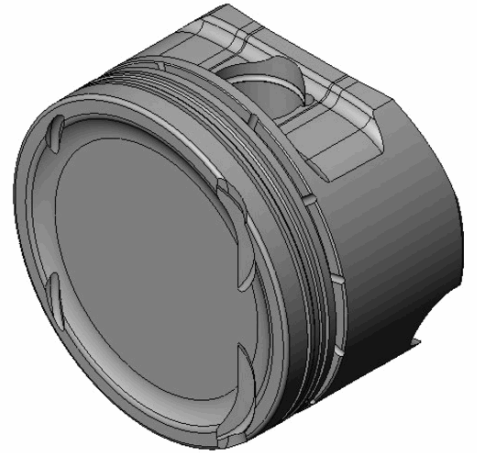
CUSTOMER NAME:

PO NUMBER:

JOB NUMBER: **503489**

DATE PRINTED: **1/2/2025**

PART NUMBER:



ENGINE SPECIFICATION

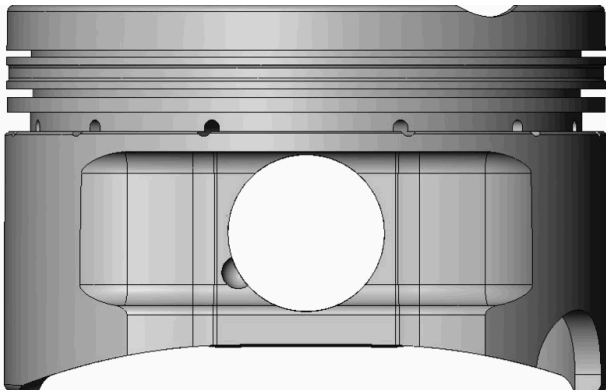
MOTOR:	Mitsubishi	HEAD:	4B11T	COMP RATIO:	9:1	ROD LENGTH:	5.659
MOTOR SIZE:	2.0 Liter	HEAD CC:	49	BLOCK HEIGHT:	8.661	TOP RING RADIAL:	.132
BORE:	3.4842	INT VALVE DIA:		GASKET THK:	.044	2 nd RING RADIAL:	.141
STROKE:	86.000	EXT VALVE DIA:		DECK CLEARANCE:	.003	OIL RING RADIAL:	.123

PISTON SPECIFICATION

FORGING#:	86-2A	DISH/DEPTH:	.090	PIN DIAMETER:	.905		
DOME HEIGHT:	.000	CAM PROFILE:	5C4T17	PIN FIT TO:	.9063		
DOME/DISH VOL:	-10.240	TOP LAND VOL.:	-.920	PISTON TO CYL CLEAR:	.0037	PIN LENGTH:	2.250

RING DATA	GROOVE WIDTH		GROOVE DIAMETER	
	INCH	METRIC	INCH	METRIC
TOP RING	.0400	1.016	3.1700	80.518
2 ND RING	.0480	1.2192	3.1570	80.1878
OIL RING	.1110	2.8194	3.1780	80.7212

VALVE RELIEF	INTAKE		EXHAUST	
	INCH	METRIC	INCH	METRIC
POCKET DEPTH	-.1650	-4.191	-.0750	-1.905
POCKET ANGLE	26.000°		26.000°	
POCKET DIA.	1.5000	38.100	1.2600	32.004



COATINGS:	-
-----------	---

PISTON WEIGHT:	374
----------------	------------

COMPRESSION HEIGHT:	1.313	CENTER OF PIN TO DECK
---------------------	--------------	-----------------------

TURN DIA:	3.4805
-----------	---------------

GAUGE POINT:	.500	INCHES UP FROM BOTTOM OF SKIRT
--------------	-------------	--------------------------------