

## CUSTOMER INFORMATION

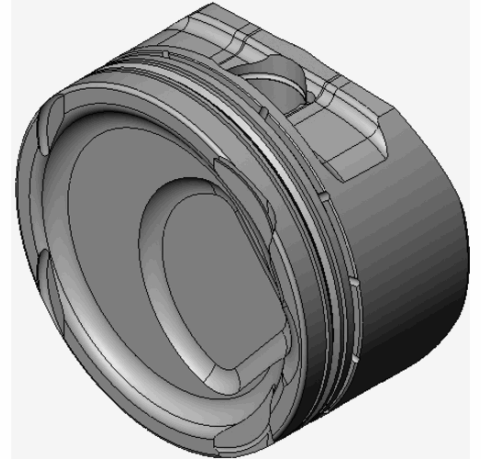
CUSTOMER NAME:

PO NUMBER:

JOB NUMBER: **459710**

DATE PRINTED: **1/2/2025**

PART NUMBER:



## ENGINE SPECIFICATION

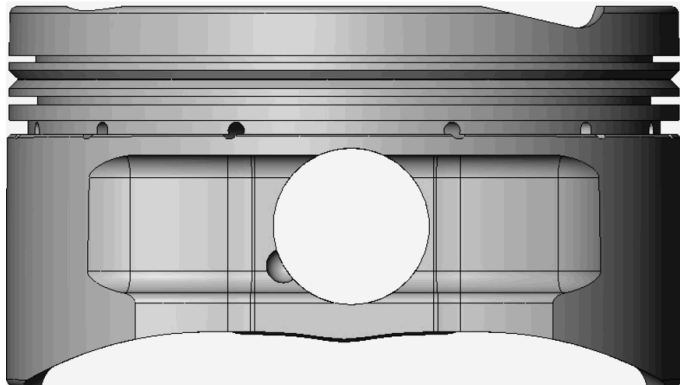
MOTOR:	<b>Toyota</b>	HEAD:	<b>2GR-FSE</b>	COMP RATIO:	<b>9:1</b>	ROD LENGTH:	<b>147.500</b>
MOTOR SIZE:	<b>3.5L</b>	HEAD CC:	<b>41.7</b>	BLOCK HEIGHT:	<b>8.660</b>	TOP RING RADIAL:	<b>.140</b>
BORE:	<b>3.740</b>	INT VALVE DIA:		GASKET THK:	<b>.023</b>	2 <sup>nd</sup> RING RADIAL:	<b>.154</b>
STROKE:	<b>83.000</b>	EXT VALVE DIA:		DECK CLEARANCE:	<b>.003</b>	OIL RING RADIAL:	<b>.099</b>

## PISTON SPECIFICATION

FORGING#:	<b>93-2</b>	DISH/DEPTH:	<b>.175</b>	PIN DIAMETER:	<b>.866</b>
DOME HEIGHT:	<b>.000</b>	CAM PROFILE:	<b>10MC45415</b>	PIN FIT TO:	<b>.8668</b>
DOME/DISH VOL:	<b>-26.400</b>	TOP LAND VOL.:	<b>-1.030</b>	PISTON TO CYL CLEAR:	<b>.0035</b>
				PIN LENGTH:	<b>2.500</b>

RING DATA	GROOVE WIDTH		GROOVE DIAMETER	
	INCH	METRIC	INCH	METRIC
TOP RING	.0400	1.016	3.4150	86.741
2 <sup>ND</sup> RING	.0480	1.2192	3.3870	86.0298
OIL RING	.0780	1.9812	3.4920	88.6968

VALVE RELIEF	INTAKE		EXHAUST	
	INCH	METRIC	INCH	METRIC
POCKET DEPTH	-.1450	-3.683	-.0600	-1.524
POCKET ANGLE	13.000°		12.000°	
POCKET DIA.	1.6500	41.910	1.4500	36.830



COATINGS:	<b>Crown Coating</b>
-----------	----------------------

PISTON WEIGHT:	<b>388</b>
----------------	------------

COMPRESSION HEIGHT:	<b>1.216</b>	CENTER OF PIN TO DECK
---------------------	--------------	-----------------------

TURN DIA:	<b>3.7365</b>
-----------	---------------

GAUGE POINT:	<b>.400</b>	INCHES UP FROM BOTTOM OF SKIRT
--------------	-------------	--------------------------------