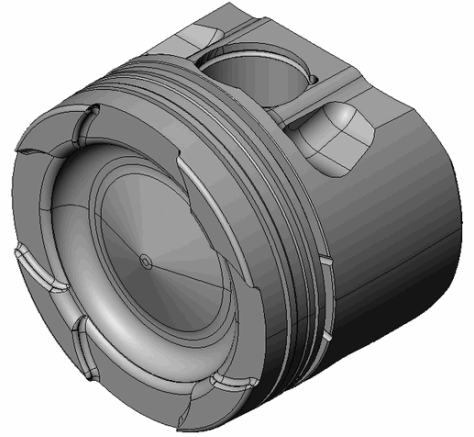


## CUSTOMER INFORMATION

CUSTOMER NAME:	
PO NUMBER:	
JOB NUMBER:	
DATE PRINTED:	<b>9/18/2020</b>
PART NUMBER:	<b>DH7126</b>



## ENGINE SPECIFICATION

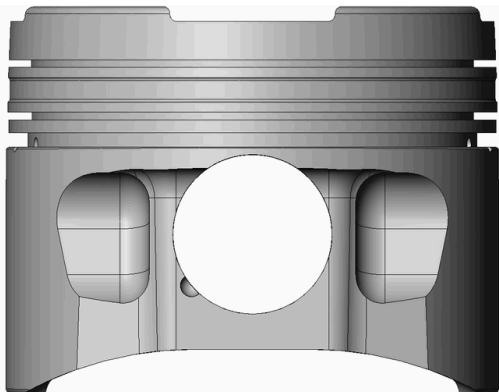
MOTOR:	<b>Cummins</b>	HEAD:	<b>ISB-CR 24V</b>	COMP RATIO:	<b>:1</b>	ROD LENGTH:	<b>.000</b>
MOTOR SIZE:	<b>6.7L</b>	HEAD CC:		BLOCK HEIGHT:	<b>.000</b>	TOP RING RADIAL:	<b>.000</b>
BORE:	<b>4.215</b>	INT VALVE DIA:	<b>.000</b>	GASKET THK:	<b>.000</b>	2 <sup>nd</sup> RING RADIAL:	<b>.000</b>
STROKE:	<b>.000</b>	EXT VALVE DIA:	<b>.000</b>	DECK CLEARANCE:	<b>.000</b>	OIL RING RADIAL:	<b>.000</b>

## PISTON SPECIFICATION

FORGING#:	<b>DSL104</b>	DISH/DEPTH:	<b>-.510</b>	PIN DIAMETER:	<b>1.358</b>
DOME HEIGHT:	<b>.000</b>	CAM PROFILE:	<b>CP2DSL</b>	PIN FIT TO:	<b>1.3592</b>
DOME/DISH VOL:	<b>-59.150</b>	TOP LAND VOL.:	<b>-4.270</b>	PISTON TO CYL CLEAR:	<b>.0100</b>
				PIN LENGTH:	<b>3.155</b>

RING DATA	GROOVE WIDTH		GROOVE DIAMETER	
	INCH	METRIC	INCH	METRIC
TOP RING	.0640	1.6764	3.7640	95.6056
2 <sup>ND</sup> RING	.0640	1.6764	3.7620	95.5548
OIL RING	.1190	3.0734	3.8160	96.9264

VALVE RELIEF	INTAKE		EXHAUST	
	INCH	METRIC	INCH	METRIC
POCKET DEPTH				
POCKET ANGLE				
POCKET DIA.				



COATINGS:	<b>Entire Piston Type III (Green) Anodize</b>
-----------	---

PISTON WEIGHT:	<b>942</b>
----------------	------------

COMPRESSION HEIGHT:	<b>1.932</b>	<b>CENTER OF PIN TO DECK</b>
---------------------	--------------	------------------------------

TURN DIA:	<b>4.2050</b>
-----------	---------------

GAUGE POINT:	<b>.400</b>	<b>INCHES UP FROM BOTTOM OF SKIRT</b>
--------------	-------------	---------------------------------------